

(in compliance with the CORNER PERPETUATION AND FILING ACT, Wyoming Statutes, 1977, Section 36-11-101, et. seq., and the Rules and Regulations of the Board of Registration for Professional Engineers and Professional Land Surveyors)

Reverse side of this form may be used if more space is needed.

Record of original survey and citation of source of historical information (if corner is lost or obliterated). Description of corner monumentation evidence found and/or monument and accessories established to perpetuate the location of this corner. Sketch of relative location of monument, accessories, and reference points with course and distance to adjacent corner(s) (if determined in this survey). Method and rationale for reestablishment of lost or obliterated corner.

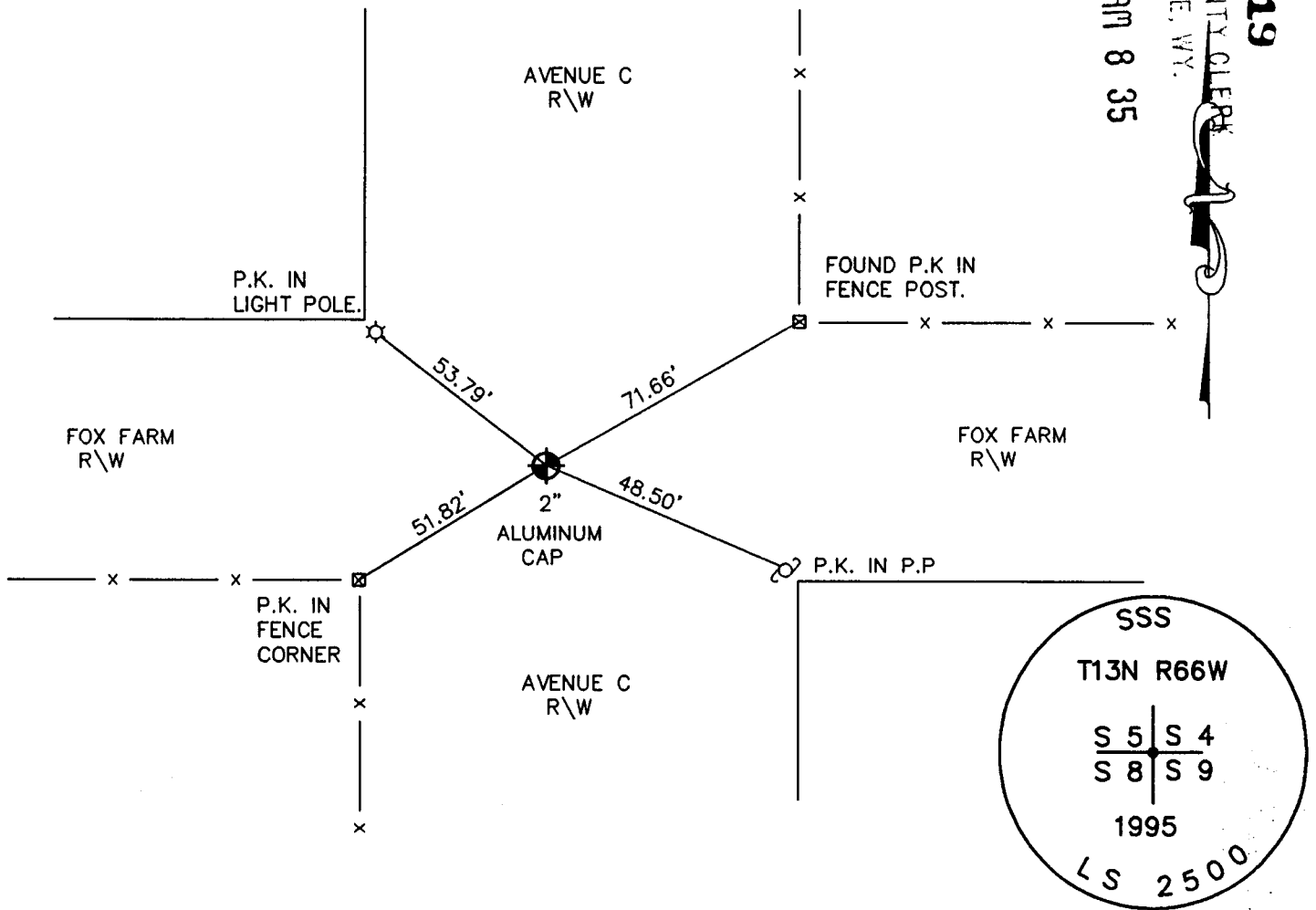
GLO RECORD: UNKNOWN.

MONUMENT FOUND: FOUND A SQAURE STOVE BOLT AND REPLACED.

MONUMENT SET: SET A 5/8" X 24" REBAR WITH 2" ALUMINUM CAP, CAP MARKED AS SHOWN BELOW.

REFERENCES: REFERENCES SHOWN BELOW.

197519
 LARAMIE COUNTY CLERK
 CHEYENNE, WY.
 97 FEB 7 AM 8 35



Date of Field Work: 95074

Office Reference: 3-14-95

Firm/Agency, Address

STEIL SURVEYING SERVICES, LLC

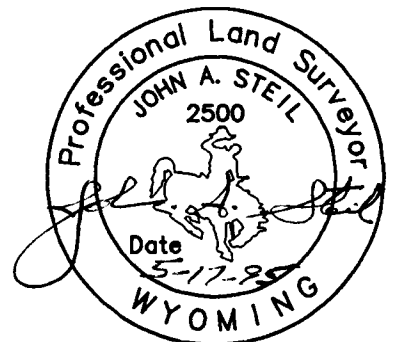
1102 WEST 19th STREET

CHEYENNE WY 82001

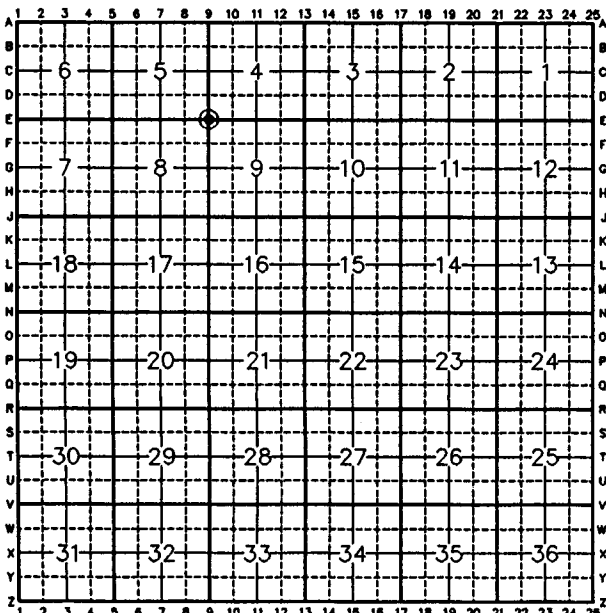
Telephone Number: (307) 634-7273

This corner record was prepared by me or under my direction and supervision.

SEAL & SIGNATURE



CROSS INDEX DIAGRAM



BOOK 1443

Corner Name: SW SECTION CORNER Section: 4 T13N R66W; 6th P.M. Cross-Index No.: E-9

0930